



ARTS

TRAIL

Summer / Autumn 2022

# SPOTLIGHT ON EVENTS

Free events taking place throughout the town over the Summer / Autumn. Check the website for more events and full details on dates, times, and locations:

[www.cultureweston.org.uk/whats-on/](http://www.cultureweston.org.uk/whats-on/)

## Climate Arts Workshops

Creatively explore environmental topics and sustainable themes, using reclaimed, re-used, ethically sourced materials to create spectacular flags, banners, costumes, headdresses, props, instruments for the Climate Carnival.

Saturdays throughout summer,  
Weston Artspace



## Weston Bandstand Sessions

Outdoor live music sessions from diverse musicians and musical genres taking place at bandstands and stages around the town, to breathe life into public spaces through the sound of music.

Dates throughout summer,  
check the website schedule:



## Whirligig

Theatre Orchard's award-winning outdoor performance arts festival returns with its trademark line-up of extraordinary, eclectic acts and guaranteed crowd-pleasers. This year, with extra special, monster-sized surprises as the Italian Gardens is transformed into a world of creativity and wonder.

9-10 September



## Climate Carnival

Come together for the Climate Carnival and show solidarity for climate action. A community-led parade will feature a kaleidoscopic display of environmentally themed carnival arts, with a carnival finale event, including music, performances, dancing, an environmental fashion parade and more in the Italian Gardens.

2–5pm, Sunday 11 September



## Green Futures

A weekend programme of talks, films and activities to discuss and raise awareness of the environmental climate emergency, and explore how communities can take action at a local level.

23–24 September

## Arts & Health Festival

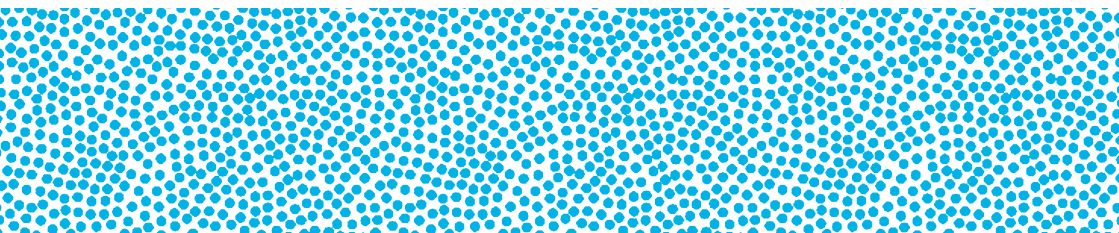
With a theme of 'Global Weston', a programme of participatory projects, creative activities, performance and talks on the benefits of creativity for health and wellbeing. Featuring an outdoor photography exhibition of portraits of staff from Weston General Hospital by Paul Blakemore, a community chorale with St George's Hall, seaside synchronised swimming and more. 6–9 October





## LANDMARKS & VENUES

GP	The Grand Pier	TS	Train Station	AS	Artspace	LC	Loves Cafe
BP	Birnbeck Pier	SC	Sovereign Centre	GR	Grove Park	LB	Library
TR	Tropicana	ML	Marine Lake	IG	Italian Gardens	WC	Public Toilets





# ARTWORKS

## 01 See Monster

📍 [Tropicana](#), from end August. Harnessing renewable energy from the great British weather, this reimagined offshore platform is transformed into one the UK's largest public art installations. Featuring experiments, performances, gardens and even waterfalls—See Monster showcases creativity and innovation to inspire conversations about a sustainable future. [www.seemonster.co.uk](http://www.seemonster.co.uk)

## 02 Weston Wallz

📍 [See QR link locations](#). A street art and mural trail featuring bespoke new artworks on walls around the town centre, in association with Bristol's infamous Upfest.



## 03 Future Vision of the Sea

📍 [Weston Library & Dolphin Square fencing](#). A collaborative artwork created by YMCA youth group and artist Jasmine Thompson to paint a colourful picture of a utopian coastline with a sprinkle of Weston landmarks, memories, and burger vans.

## 04 See Monster Zine & Library

📍 [Tropicana Cafe](#). Create your own handmade zine and share your uncensored views about sustainability and the environment. Pick up a DIY zine template to create your own to add to the mini zine library at the Tropicana Cafe.

## 05 Monster Trail (for Families/Kids)

📍 [The Sovereign](#), until 4 September. Painted by local schools, 17 slippery sea 'Monsters' are displayed around the Town Centre. Pop into the Sovereign to get your entry form and start hunting.

## 06 Grow Feral Micro-Garden

📍 [Italian Gardens](#). A micro-garden space-come-art-installation inspired by old water towers, in the heart of the town centre. Help yourselves to the edible plants that grow there and enjoy a moment of calm amongst the plants. Co-created with the local community and designed by artist Jo Lathwood.

## 07 Ever Forward by Jo Lathwood

📍 [Train Station](#), from September. Green horticultural art installation on the forecourt of Weston train station inspired by Weston's geography and heritage. The installation incorporates a solar powered watering system that collects and recycles rainwater to create an innovative self-watering irrigation system for blooming planters filled with local and native species to thrive.

## 08 Grow Feral Plant Kits

📍 [Tropicana & Loves Cafe](#). Pick up a hand-made plant kit containing a hand-gathered wild-seed pack, unique botanical plant print, and a green word bookmark. Accessed via a wall-based vending machine for £1.

## 09 Letters for the Sea,

### Letters for the Land

📍 [Marine Lake, The Grand Pier, Royal Sands Putting Green & Grove Park](#). **Letters for the Sea:** Look out to sea and take in contemplative words and reflective sentiments through the windows of the seafront shelters, and upon poster boards along the promenade.

**Letters for the Land:** Large-scale word installations dotted along the seafront that consider the wider world, and our place within it, together.

## 10 Uplifting Haikus

📍 [The Sovereign Glass Elevators](#). Inspiring haiku poems to uplift you in the Sovereign's glass elevators and leave you with good thoughts to take home. Created by 11-14 year olds from Off the Record.

## 11 Look Up!

📍 [Weston High Street](#). Colourful new flag installation for the High Street, inspired by the sights of Weston, and co-designed by the Weston Artspace community and artist Zara Shepherd.

## 12 Weston Museum: Horrible Histories

### Exhibition (for Families/Kids)

📍 [Weston Museum](#). The World of Martin Brown; Horrible Histories and other dazzling drawings. And discover the history of the town and the surrounding area from prehistoric times to the present day at Weston's distinctive historic building.

## 13 Weston Photography Open Exhibition

📍 [Sovereign Centre & Loves Cafe](#), throughout September. Exhibition representing the colourful nature of the town and its unique landscape in a vibrant exhibition of eclectic images taken by both local residents and visitors, that showcases people's take on the town as seen through the camera lens.

## 14 The Flood

📍 [Tropicana](#), 5-16 September. An immersive installation, created by acclaimed film-maker Sally Low and writer and climate activist Ana Salote. A short film and informative exhibition looks at past, present and future flood risk in Weston-super-Mare.

## 15 Weston-super-Shrine:

### Morag Myerscough

📍 [Big Lamp Corner](#), from Autumn. A super-colourful semi-permanent artwork and bandstand shaped shrine to liven up, and inject vibrancy into the high street. Designed by acclaimed artist Morag Myerscough and co-created with the local community as part of a pioneering heritage project '21st Century super Shrines'. Funded by Historic England.

# ARTWORKS

**16 Weston Artspace Windows**  
📍 **High Street.** Rolling windows exhibitions and pop-up shops featuring artworks and installations by artists from the local creative community including OTR's creative corner.

**17 Precious Plastics**  
📍 **Faces Cafe, 4-6 Station Road, from September.** Precious Plastics is an international open hardware plastic recycling project allowing for the creation of new products out of recycled plastic on a small scale. A PP machine will be installed at Faces Cafe for people to come along with their plastics to try out.

**18 Holm, Tania Kovats**  
📍 **Madeira Cove Garden.** Madeira Cove looks out towards Steep Holm island, a remote nature reserve in the Bristol Channel. The island was the inspiration for HOLM, a sculpture cast in pale concrete replicating the distinctive landmass in miniature. Commissioned as part of Wonders of Weston 2010.

**19 Wrights & Sights: Everything You Need to Build a Town is Here**  
📍 **Various locations.** Keep an eye out for the 'Wonders of Weston' wall-mounted, metal-cast signs dotted around the town. A constellation of 41 plaques pick out sights of interest throughout the town, to encourage the viewer to think about the location they are standing in. Commissioned as part of Wonders of Weston 2010.

**20 Silica, Wolfgang Buttress**  
📍 **Big Lamp Corner.** Known locally as 'the carrot', this pagoda-like public art sculpture acts as a landmark for the town's key historical location of 'big lamp corner' whose form, colour and texture responds to maritime themes of sand, water and light. Public artwork commissioned in 2007.

**21 A Heritage Walking Tour of Weston-super-Mare**  
This Heritage England walking tour celebrates the rich and varied architectural heritage of the town and tells the story of how it grew into a busy seaside resort. [Download map here:](#)



# AUDIO WORKS

Plug in your headphones, scan the QR code and listen to these atmospheric, site-specific audio pieces in location, at your leisure.

**A Rebecca Tantony: The Women of no.11**  
📍 **High Street.** Conjuring the lives of women across the ages via conversations, and the sights and sounds of Weston-super-Mare.



**B Tom Marshman: Queer Tales of Weston**

📍 **Start at the Train Station.** Audio Tour drawing on local LGBTQ+ memories around Weston. Revel in queer stories of heritage places and everyday spaces as Tom weaves you through Weston with a theatrical flourish.



**C Phil Owen & Sam Francis: A Ballad of Anchor Head Cove**

📍 **Anchor Head Cove.** A montage of stories and a folk song exploring the coastline's past heritage, and unfolding into a sound work created for this small, rocky beach spot.



**D OTR Speak**

📍 **The Grand Pier.** A collage of lively, thoughtful audio snippets spoken by the young people who wrote them.



**E Chapter One: Seafront Poetry Walk**

📍 **Seafront shelters.** Take a stroll along the promenade and listen to texts written especially for the seafront by Chapter one members and read by the contributors.



**F Weathering Together**

📍 **Birnbeck Pier.** A collaborative, multi-generational community project that gathers the eclectic voices of Weston-super-Mare and explores our ever-volatile weather cycles through an immersive audio experience. Co-created with sound artist Joseff Harris.



# WESTON WANDERS: ARTS TRAIL

- ▼ Public exhibitions & art installations
- ▼ Audio & text works
- ▲ Workshops & events
- ▲ Artists & projects
- ▲ Happenings & encounters
- ▲ People & place

This arts trail map intends to shine a light on existing artworks and intriguing landmarks, alongside curious new projects and temporary spaces. It invites visitors and residents of WsM to explore the town through a creative lens, on foot.

## Instructions for a Weston Wander

Weave your way around the town  
Slow down your pace  
Look down, look up and look out  
Open your eyes and your ears  
Stand still for a moment  
Explore the green spaces  
Delve into the blue places  
Look out towards Wales and the Islands  
in between  
Delight in the shimmering silver desert  
Take in the pink thrills of the sky at sundown  
Promenade along the promenade  
Take it all in, or just some of it,  
and always return

Please check the website for dates and full details  
as some things listed on the map are date specific:  
[www.cultureweston.org.uk](http://www.cultureweston.org.uk)

Supporters: Thank you to our supporters who helped make Weston  
Presents 2022 possible:

Thanks to Severnside Community Rail Partnership and  
Bristol Wessex Water for supporting a new art installation  
at WsM Train Station and town-wide arts trail.



/cultureweston  
 /cultureweston  
 /cultureweston

Share your experience of your  
Arts Trail wander online:  
**#WSMArtsTrail**